

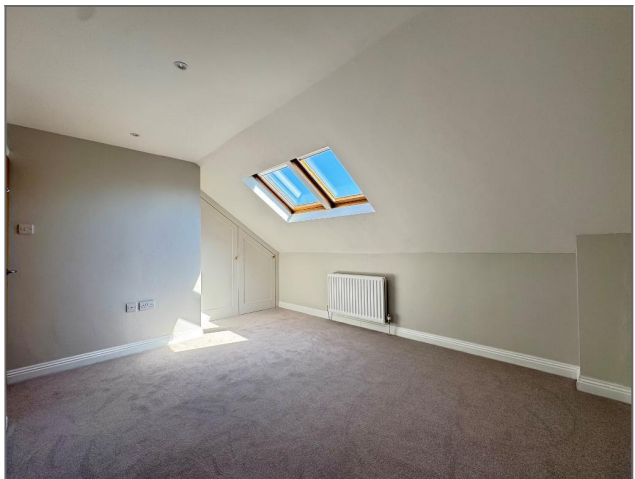
# Kushy Move



**Sternhall Lane SE15**

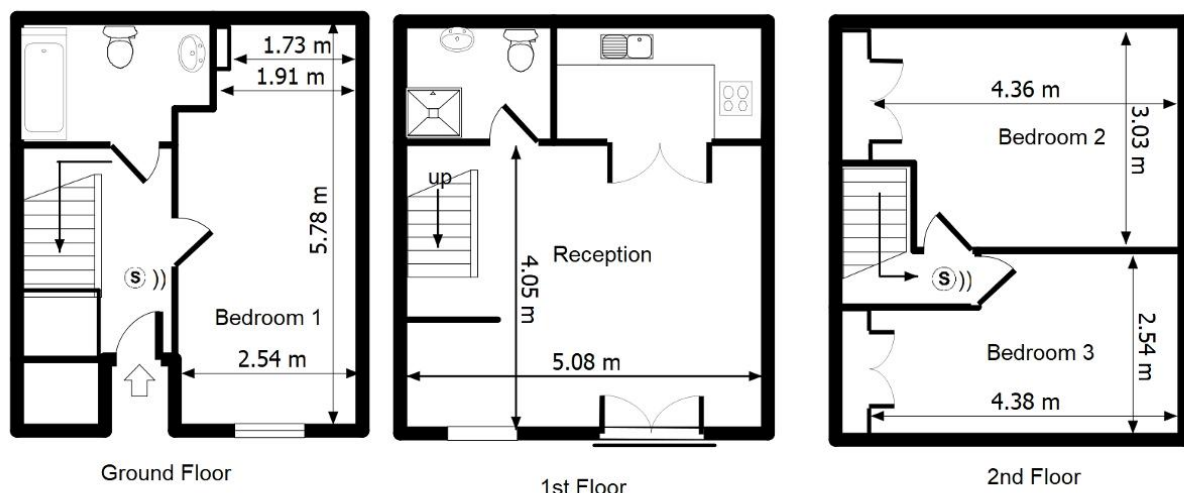
**£623 per week**

- Set over three floors
- Three double bedrooms
- Two bathrooms
- Own private entrance
- Close to Peckham Rye Station
- Offered unfurnished





## Floorplans



The measurements of the floor plans are approximate and are not to be relied upon for the purpose of buying furniture or materials. Measurements are to the maximum point of each room. 2nd floor bedrooms do have Eaves sloped ceilings.

## Energy Efficiency and Environmental Impact

Score	Energy rating	Current	Potential
92+	A		
81-91	B		87 B
69-80	C	74 C	
55-68	D		
39-54	E		
21-38	F		
1-20	G		

**Disclaimer:** We do our best to ensure that our sales particulars are accurate and are not misleading. We also ask our clients to check their own sales particulars and verify the information. Therefore, these particulars, whilst believed to be accurate are set out as a general outline for guidance only and do not constitute any part of an offer or contract. Intending purchasers should not rely on them as statements or representation of fact, but must satisfy themselves by inspection or otherwise as to their accuracy. We have not carried out a detailed survey nor tested the services, appliances and specific fittings. Room sizes should not be relied upon for carpets and furnishings, and the measurements given are approximate. No person in this firm's employment has the authority to make or give any representation or warranty in respect of the property. Tenure - Kushy Move have not had sight of the Title documents and the buyer is advised to obtain verification from their Solicitor or Surveyor. You are advised to contact the local authority for Council Tax information.

